

Ahead of the Curve: Local Private School Takes Progressive Approach to Education

Nashua's World Academy launches plans to construct two new buildings, celebrates a 30th anniversary and looks ahead to their Middle School students tackling 21st Century jobs.

Bustling and busy, the energy that flows through the halls at World Academy engulfs you as you first walk through the door. For the first time visitor, there is an overwhelming amount of information, your eye is drawn to the notices to parents, student projects and bits of the school's history that adorn the walls. If class has just been released, you'll barely be able to hear Cam and Brooke, the ever present staff at the front desk, as they greet you merrily over the noise of the students. Ferrying papers and information to and from the front desk, saying their goodbyes to parents or carrying on a casual conversation inside the door of the Directors' offices...there are kids everywhere, and they are all smiling and laughing! Their sense of belonging in this space is obvious; they are at home here.

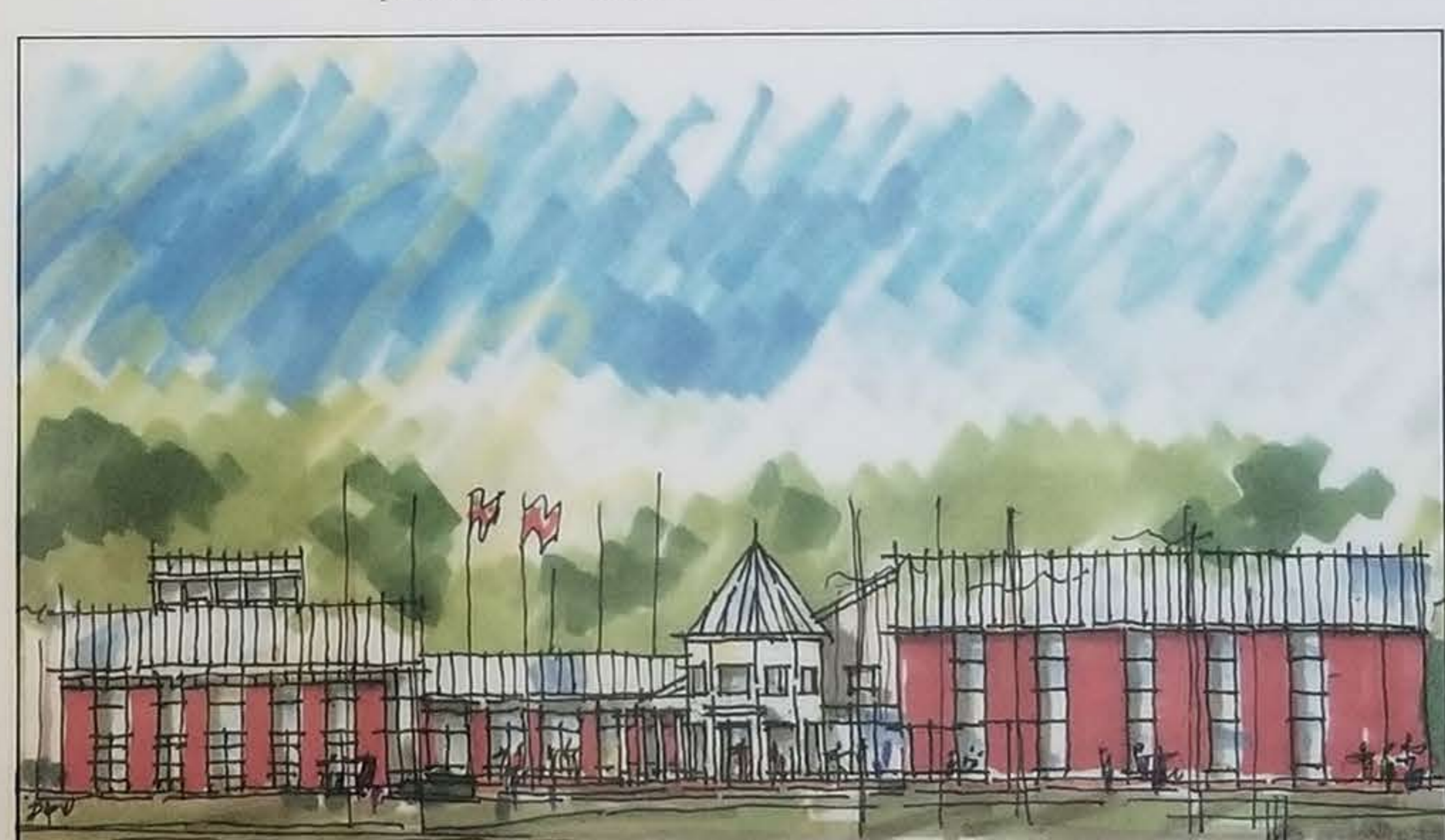
Set back off the road, the building and parking lot appear deceptively calm from the outside. You would have to slow down and really look to see a hint of the activity going on just inside the entrance. And surprisingly, not too many people are truly aware of all World Academy is really doing behind those doors. Executive Director, Kathy Nelson and her staff are working hard to change that. World Academy is a new name for the school, a part of a larger effort to bring to light all that is offered on the campus. Previously known as "The World Schools" the school has, for a long time, been most widely known for its successful "Small World Country Day School" program for children aged six weeks through PreSchool. It's a well-earned reputation; with thirty years of successful, innovative Early Childhood Education behind it, the school has long since established itself as the area's premier choice for early care and education. Carefully coordinated infant, toddler and Preschool programs are based on the RIE principal, authentically engaging the young child and treating each student with respect throughout the learning process. But, as successful as World Academy has been with this program,

it is only a part of what the school offers. With a total student body of over 350 through Grade Eight; a curriculum purposefully strong in Science, Technology, Engineering and Math; and a faculty committed to supporting both the students and their families, this neat, white building off Spit Brook Road houses an academic institution that is also poised to position itself as a leader in Elementary and Middle School education in Southern New Hampshire. Looking back on the decision to expand World Academy through the middle school level, Director Lynn Ouellette comments on the process, "We are committed to supporting our students through the support we offer their families, as per our mission. We gather this information through formal surveys and casual discussions with families each day. The needs of our families have motivated us to create programs that provide quality educational experiences from infant through Grade Eight. The request to have students in one high quality, consistent environment until high school has been expressed consistently, and is an incredible educational experience that we are excited to be providing."

With the success that the Elementary program has seen so far, World Academy has a strong track record, yet is also forward thinking enough enough to embrace change. Plans to expand upon the current facility will find Middle Schools students at World Academy in a state-of-the-art building carefully planned to meet their needs and the needs of an enhanced curriculum that prepares them for lives and careers in a 21st century global marketplace. A marketplace which, while exciting, can be difficult to predict, notes the Executive Director. "Many of the jobs we are preparing our children for have not even been invented yet, so it is of vital import to teach 21st century skills - communication, collaboration, problem solving, critical thinking, creativity and innovation, along with a focus on Science, Technology, Engineering and

Math - to provide our students with the tools to achieve and compete successfully in the future," Nelson says. "Fortunately, we have a deep, qualified and innovative staff, progressive enough to accomplish this task, many of whom have been with World Academy for over 20 years."

World Academy's new Middle School building will put concrete under a curriculum that is already addressing these needs. Principal Lisa Dias and her competent faculty work together to individualize the program for each student. Once enrolled, an ISP (Individual Student Plan) is created for every World Academy student. Together with the efforts of the dedicated faculty, the ISP ensures that multiple intelligences and learning styles



An architectural rendering depicts the view of World Academy facility from Spit Brook road as it will appear after construction of the new Middle School facility and Gym/Theater complex.

are addressed while the school delivers a seamless education, preparing each student to finesse secondary education. Language instruction begins early in this school: sign language is available to Infants through Kindergarten and World Languages become a part of the curriculum as early as Kindergarten. All students participate in rigorous Physical Education classes; present music and dance concerts for public and private audiences as members of the Chorus, are exposed to music theory, drama, instrument instruction and a variety of arts throughout the school.

Technology classes are taught in a lab setting on Mac computers, where even Kindergarten students practice keyboarding Internet safety and research skills. Beyond the lab itself, technology is omnipresent throughout the school. Computers in the classrooms facilitate lesson plans and "interactive whiteboards" and webcasts are oft-utilized resources. Recently, two classes of students at World Academy skyped with fellow classmates overseas in Rome and China. In Grades Four through Seven the 1:1 laptop program integrates technology across the curriculum. Before and after school options offer homework assistance from teachers, and extra-curricular opportunities include drama, dance, karate and private music lessons. There are even plans in the works to



Sixth grade students at World Academy collaborate while researching a project due in their Business and Economics elective course.

years of experience providing excellence and enrichment in our curriculum and programming at World Academy, we are excited to expand our school, both in our curriculum and in our facilities, to include middle school age children. All of our students are on a continuum that will prepare them for a global future, from infants through Grade Eight."

Some things at World Academy will not change with all the new developments in the present and future. The same small student to

bright with promise for the school and its students. It's a vision they can easily share with the confidence of three decades of success behind them.

Laurie Collins, Music Director and 23 year World Academy teacher, and the entire staff at World Academy, invite all to join the students in their concert performance at Barnes & Noble on Spit Brook Road in South Nashua. The performance will be held Monday March 28th, 2011 from 6:30-8:00pm. This wonderful evening will be a night to remember for World

offer Kumon. The new construction, already planned for completion in late summer 2012, will add the Middle School facility as well as a Gymnasium/Theater Complex to the already impressive six acre campus; currently home to World Academy's beautiful 22,000 square foot facility, three modern playgrounds, a natural playground, summer camp cabin and in-ground swimming and wading pools. Staff Development Director, Martha Maye, voices the excitement and confidence of the entire faculty and staff as they look forward to these next steps for World Academy. "With 30

teacher ratios and easy, open communication between families and staff will continue. The school and its staff will remain dedicated to supporting the families of enrolled students and responding to the educational needs of those families and the Nashua community. World Academy will maintain their long-held N.A.E.Y.C. and N.E.A.S.C. accreditations, indicating to families the school's level of commitment to quality in education. Celebrating World Academy's 30th Anniversary this year, the staff is looking back fondly on many years of success, and forward to a future

Academy students and families, and also provide an excellent opportunity to speak with various members of the staff, and with families and students currently enrolled at World Academy. Please join us for a highly anticipated evening of song, story and dance.

World Academy is currently enrolling for the 2011-2012 Academic Year. Before and After School Care is available, meals are included in tuition and tours are available by appointment. For more information, or to schedule a tour, contact Admissions Manager Jenny Smith at (603) 888-1982 or jsmith@theworldschools.com